

SINGLE CONFIGURATION

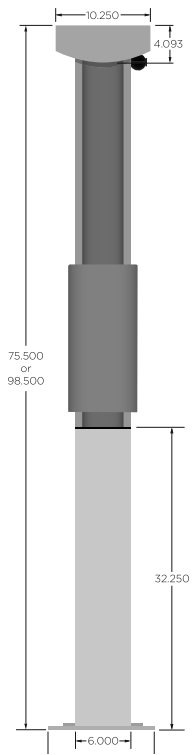


Figure 3.1
Single - 3x6x32" Front & Side

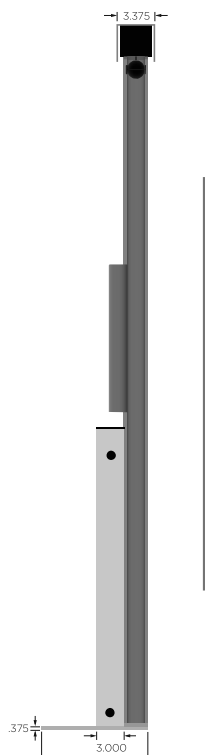


Figure 3.2
Single - 6x6x48" Front & Side

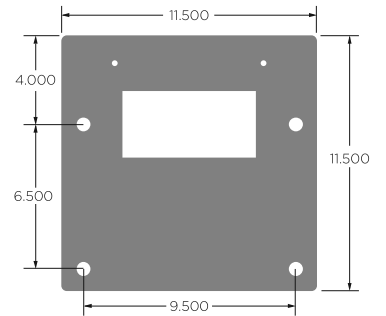
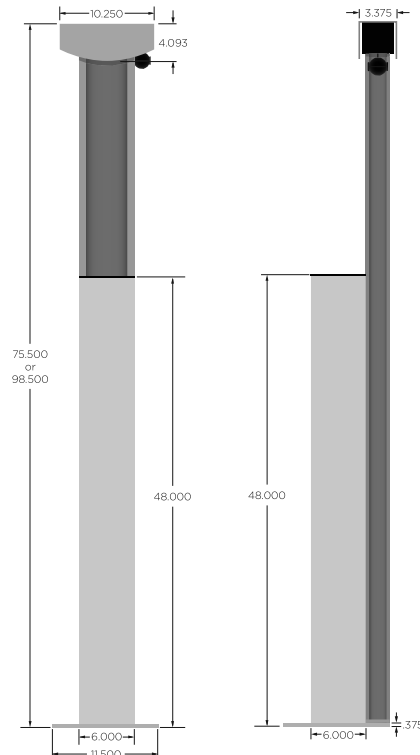


Figure 3.5
3x6x32" Raceway Baseplate

DUAL CONFIGURATION

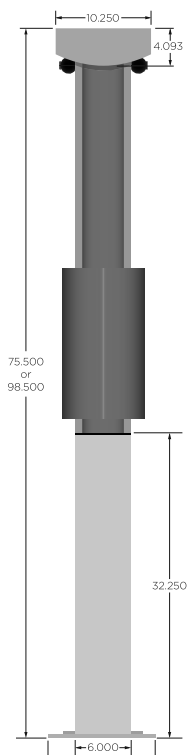


Figure 3.3
Dual - 3x6x32" Front & Side

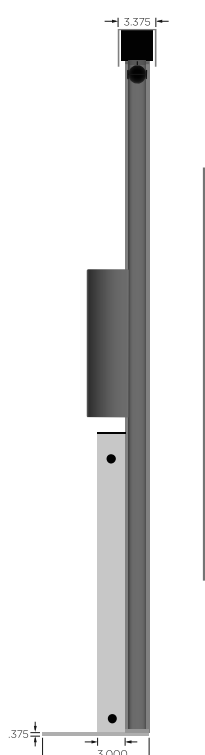


Figure 3.4
Dual - 6x6x48" Front & Side

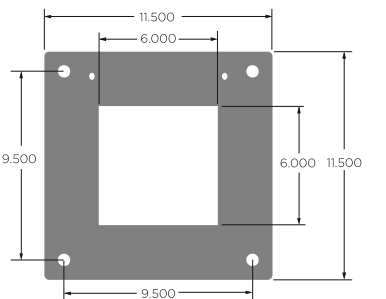
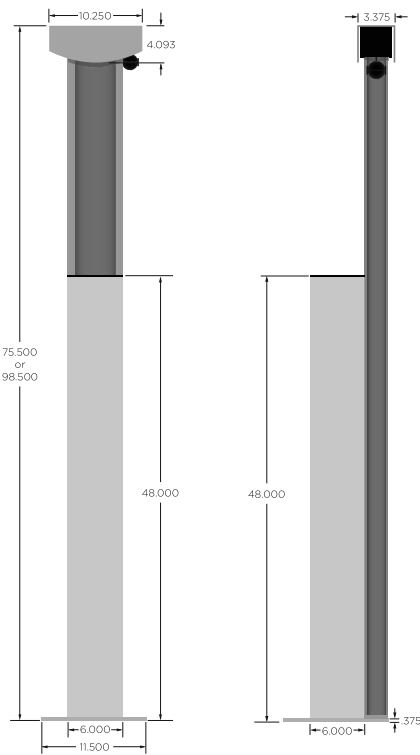


Figure 3.6
6x6x48" Raceway Baseplate

INSTALLATION (*Raceway Base*)

- 1 Remove assembly from the two (2) packages. If using the 3" x 6" x 32" raceway, remove the mounting bracket and hardware from its box and set aside.
- 2 Place the raceway base onto the concrete (*or composite*) mounting base. *A minimum base size of 18" x 18" x 18" of reinforced concrete is recommended.*
- 3 Center the base plate over the conduit (*if underground conduit is used*) and mark the four mounting hole locations onto the base. Remove the raceway assembly.
- 4 Drill mounting holes in the base. **NOTE:** *The included drop-in anchors require a 5/8" hole.*
- 5 Clean debris from the holes and install drop-in anchors using the proper setting tool (*not included*).



Figure 4.1
Drill Mounting Holes into Base



Figure 4.2
Tap in Drop-In Anchors

- 6 Place the raceway base onto the concrete base while completing (a) or (b).
 - A If conduit is stubbed up through base from underground routing, feed the power and communication wires through the opening in the base of the raceway.
 - B If conduit is above ground, remove hole plug(s) and connect conduits to the lower 1" holes in the sides of the raceway using 3/4" NPT connectors.



Figure 4.3
Feed Power Through Stub-Up

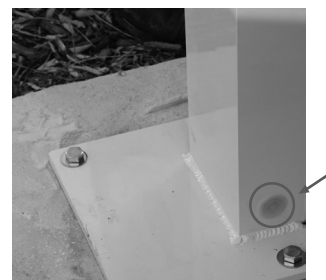


Figure 4.4
Feed Power Through Conduit

- 7 Bolt-down the raceway base using the included drop-in anchors, ensuring the base is level. Shim base plate if necessary (*shims not included*).



Figure 4.5
Bolt Down Raceway